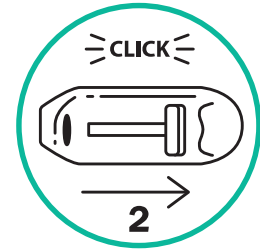
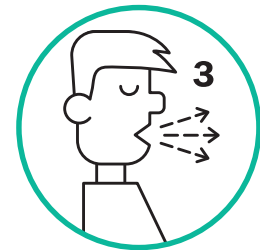


1 Open the Diskus by sliding open the mouthpiece.

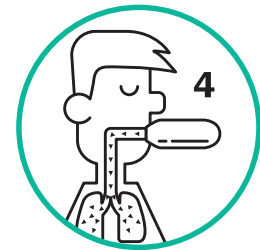


2 Load a dose by pushing the tab until a click is heard.

At this point if you accidentally breathe INTO the Diskus, drop it or shake it you will need to load a new dose (Close the mouthpiece and repeat steps 1 and 2).



3 Breathe out away from the Diskus so that your lungs are empty.



4 Place mouth over mouthpiece and breathe in deeply and quickly.

5 Hold breath for 10 seconds (or as long as you are comfortable).



6 Close the mouthpiece on the Diskus.

7 Some inhalers will require you to rinse your mouth when you are finished.

Note: To clean the Diskus wipe the mouthpiece dry if necessary.